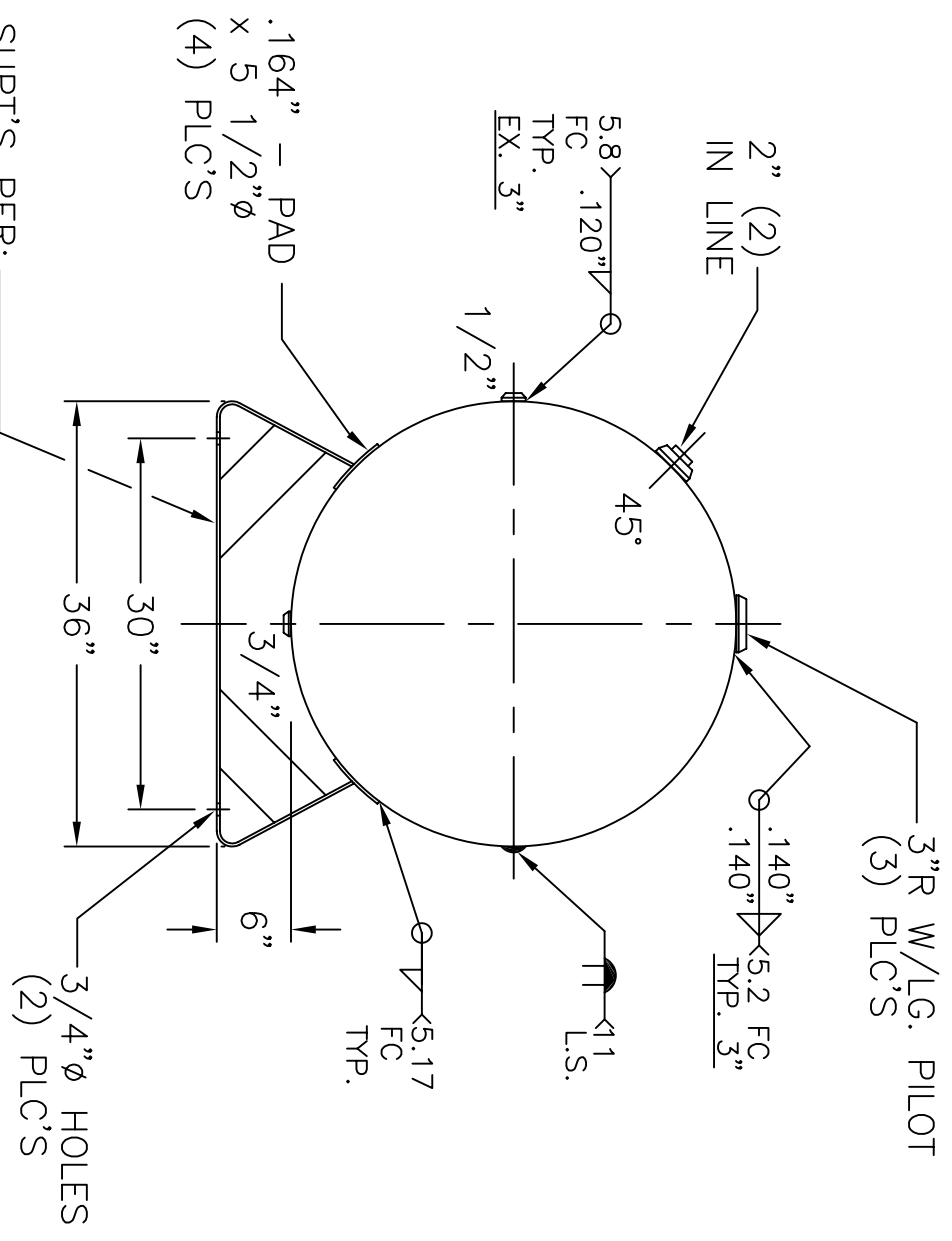


2" B W/C.I. PLUG
INSP. OPENING
(2) PLC'S

SUPT'S PER: _____
MA-102-4-C



NOTE: 1) HYDRO @ 260 PSIG. MIN.

HEADS	.218" SA-455 2:1 S.E. (.196" MIN.)	36-HA-300-W	REV. 4-13-11
HEADS	JOGGLE - .209" OFFSET	FOR: HANSON STANDARD	DATE: 10-21-92
HEADS	.200" SA-455 (.199" MIN.)	HORIZ. AIR TANK	SURFACE AREA = 65.1 SQ. FT.
SHELL		INSIDE: UNPAINTED	
M.A.W.P.	200 PSIG. @ 400 °F	OUTSIDE: PRIME	
M.D.M.T.	-20 °F @ 200 PSIG.	CAD-"B" SIZE UNDER "STD"-SERIES	
ASME SECTION VIII	DIV. 1, 2010 ADD 2010	BY: J.G.	SCALE: 3/4"=12"
X-RAY:	RT-4 SPOT L.S. ONLY	ROY E. HANSON JR. MFG.	1600 E. WASHINGTON BLVD.
GALLONS:	300 WT. 647 LBS.	LOS ANGELES, CA 90021	
SERIAL NO.			

VIEW W/OUT SUPT'S